

# the well community community update

Jesus said, "People soon become thirsty again after drinking water. But the water I give them takes away thirst altogether. It becomes a well of water within them, giving them life." - John 4:13-14

## community news + events

**Jacob's house:** We recently received over \$15,000 from the Mission Serve summer offering designated for remodeling efforts at Jacob's House. A team from First Baptist Church of Farmers Branch has taken point on the project, assessing the need, projecting costs, and planning the work. Therefore, if you are handy (e.g., painting, carpentry, landscaping), we could use your help. Watch your email for scheduled workdays.

In addition, the house needs some professional work (electrical, roofing, and plumbing). If you know of any contractors that might donate or give us a reduced rate, please let us know!

**current program participation:** This year, we made a concerted effort to grow our services. The expansion has allowed us to increase the operation of our Community Life Center by 28%, adding a day and lengthening open hours. Already we have seen an increase in daily and total participation, with a **one-day high of 61 participants** on July 30 and **183 individuals served during August**. This represents a 33% increase since the beginning of the year. More people than ever are benefiting from **the Well**!

**life:** We value "life" as a community. While this leads us to a serious consideration of how we live, we also appreciate having a good time together! Recent outings have taken us to a Texas Rangers game, the Hawaiian Falls water park., and The Ringling Bros. and Barnum & Bailey Circus. Contact Wes Keyes, Activities Coordinator, for an upcoming schedule and with your ideas, invitations, and/or discounts! ([Wes@WellCommunity.net](mailto:Wes@WellCommunity.net))

**community needs assessment:** The United Way of Metropolitan Dallas recently reported that the number of persons with serious mental illness in Dallas County has increased 12% from 2002 to 2006. The work of **the Well** is needed more than ever!

### baptized into christ

08.09.08 + Octavius Jones

09.28.08 + Steve Cornea and Lucy Johnson

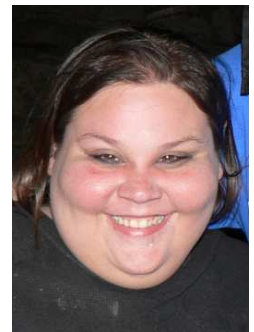
**art program:** Thanks to Ann Tabony for her untiring work in **the Well's** art program. Ann has an incredible gift - drawing great work out of her students in the most encouraging way!

Over \$1,800 worth of art was sold at the recent Community Celebration. Be sure to order Christmas cards now (see p4) and share your love for **the Well** with all those on your list!

## who is my neighbor?

### Meeting Lucy Johnson...

For the majority of her life, Lucy has faced nothing but trouble: never knowing her father, abuse at the hands of her mother's boyfriends, being removed from her care at age five, and shuffling from foster home to foster home. After being diagnosed early on with bipolar disorder, she hit the streets as a teenager where she has lived for most of the past ten years.



Lucy reports that life has been very difficult as a result of her mental illness - "Life is almost impossible for a person living with mental illness if they do not have good friends and a support system."

Here at **the Well** she has found that family and encouragement. She credits the program with helping her to learn how to treat others, develop healthy relationships, and feel like she belongs to something meaningful.

"**the Well** has helped me understand that God is real and that He loves me," says Lucy. As a result, "I am now taking better care of myself! If it were not for **the Well**, I don't know what I would do."

# admin notes

---

**2008 awards of excellence:** the Well has been named one of three finalists' for this year's **Excellence in Mission Achievement award** as presented by the **Center for Nonprofit Management**. With 71 local agencies being nominated, we are proud of this affirmation of our work. The ultimate winner of the award will be named on Friday, November 14!

**biz radio:** On Sunday, September 28, Joel was interviewed on "Pinnacle: Stories of Success" radio show on BizRadio Network 1110AM. A podcast of the interview is now on our website – [www.WellCommunity.net/podcast](http://www.WellCommunity.net/podcast)

**financial update through september 2008:** Through three quarters of 2008, we recorded approximately **\$252,000** of income and incurred expenses of approximately **\$214,000** resulting in a **\$11,000 surplus**. Thru the end of the year, our monthly income requirement is approximately **\$25,000**. For more detailed information about our finances, contact Barbara Evetts, Financial Coordinator, at [Barbara@WellCommunity.net](mailto:Barbara@WellCommunity.net).

**2008 grants to date:** We are grateful for recent gifts from **The National Christian Foundation's Urban Fund**, **The Morningstar Family Foundation**, and the **Mary Kay Corporate Fund**! Currently, we are actively pursuing leads and partnerships with numerous other foundations. We would welcome any leads on grants or other funding sources. Please contact James Pulis, Development Coordinator, at [James@WellCommunity.net](mailto:James@WellCommunity.net).

**to mail a donation:** the Well Community, 125 Sunset Ave, Dallas, TX 75208

**to make a secure online donation:** Visit our website at [www.WellCommunity.net](http://www.WellCommunity.net) and click on **DONATE** to be directed to a PayPal website. You can make a donation by way of your Visa, MasterCard, Discover, or American Express credit card. Your transaction is processed quickly, and you receive an email confirmation of your donation.

---

## "adopt-a-community-member" christmas gift program

This Christmas season, we are planning once again to give each Community Member personalized gifts. During the month of November, they will have the chance to select from a list of items things that they need or want. We anticipate needing gifts for approximately (180) individuals; therefore, we need your help!

We are seeking groups of people (congregations, Sunday School classes, offices, etc.) that would adopt a certain number of Community Members (e.g., say between 3-25). Then it would be your responsibility to purchase and wrap the gifts before the **Community Member Christmas party** on **December 16**.

If you would like to help, please contact **Vickie Albright** and let her know how many gifts your group could be responsible for ([valbright02@sbcglobal.net](mailto:valbright02@sbcglobal.net) / 972-669-8517). The week before Thanksgiving we will start mailing out the wish lists and further details.

**community christmas concert:** Featuring the musical talent of Cliff Temple and associated ministries, including **the Well Singers** (Sunday, Dec 7, at 5:30pm).

**annual community member christmas party:** Tuesday, December 16  
Join us from 4:00-8:00pm for dinner, games, and the unwrapping of presents!

Both events will be held at Cliff Temple Baptist Church • 125 Sunset Avenue

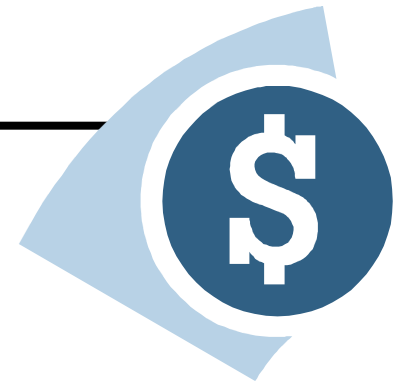


---

**become a community friend**

**pray serve give!**

# end-of-the-year campaign



## Help us...

- Bring love and health to those experiencing severe mental illness!
- Encourage faith in God and a life following after Him!
- Advance our supportive housing programs – decent housing for all!
- Feed the hungry through our weekday and Saturday meal programs!
- Sustain life-giving programming to those in need in our city!

In early September, we requested your support in the face of a funding shortfall. In order to better serve our Community Members and to improve the breadth and depth of our programming, we increased our budget this year to \$342,000, a 40% increase over 2007. Although missionally we are moving forward, funding has lagged behind. Last year, over 230 donors gave approximately 70% of our budget, with the additional coming from foundations and congregations. While we are under budget for the year with organizational giving for the most part keeping up, our individual support is falling behind. While this might be expected in a slowing economy, our work continues.

**Since our request went out, more than \$40,000 from individual donors have been received!** In addition, we have been blessed to be given an unsolicited \$13,000 grant from the National Christian Foundation's Urban Fund, with other requests in the works! Therefore, we are making good progress toward our \$100,000 year-end goal.

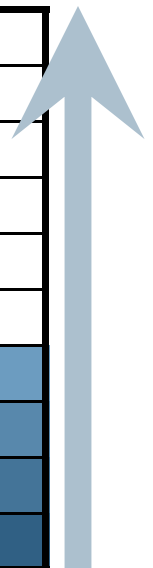
**However, to finish the year strong, we can still use your help!** We are asking you, our Community Friends, to help carry on the work before us. Here's how you can help.

- **Can you make a gift at this time?** If you have planned to make an end-of-year gift, we would happily welcome it now.
- **Can you host a gathering in your home?** We will gladly come and share with any group, personally inviting them to partner with us.

**the Well** is a grassroots movement of people caring for others; therefore, *every* gift is significant. Please be in prayer regarding your gift.

## our goal

\$100,000
\$90,000
\$80,000
\$70,000
\$60,000
\$50,000
\$40,000
\$30,000
\$20,000
\$10,000



## 2<sup>nd</sup> annual community celebration

On Sunday evening, September 21, more than 350 people gathered to party! Thanks to all of our Community Friends for celebrating with us, sponsoring tables, introducing contacts to our work, and subsidizing our Community Members' meals!

Thanks go out to Devon Dawson and The Cowtown Opry Saddle Pals for the great music and to Eddie Deen and the incredible staff of The Ranch for a great evening and your ongoing support of mental health endeavors! A special thanks goes out to our Community Celebration Team – Timothy Wood, Pat Barnes, Kristi Coleman, Amy Kirchen, and Pat Packard – for making the evening come together!



# community update

## the well community

- **the well community** is both a church and a community development organization, providing resources to our neighbors in need. *The kingdom and the cup of cold water* (Matthew 10:7-8, 42)!
- **our mission:** the Well is a community of people working to bring love and health to those experiencing severe mental illness.
- **our strategy:** We focus on the core issues related to mental illness – *isolation, hopelessness, poverty* – by providing our Community Members with a healthy environment and access to needed resources.
- **our philosophy:** We do not have clients or consumers of our services – we have *Community Members*. We believe that *together* we can become more of whom God made us to be, both individually & collectively.

### promote the well! purchase **christmas cards**

Help publicize the work of **the Well Community** by ordering your Christmas Cards today! A set of (10) cards will feature ten original images, created by our Community Members, and will be professionally printed. Sets sell for **\$12** and we will be taking orders between now and **November 1**. Cards will be shipped by Nov 15! Use the enclosed order form to order now!

